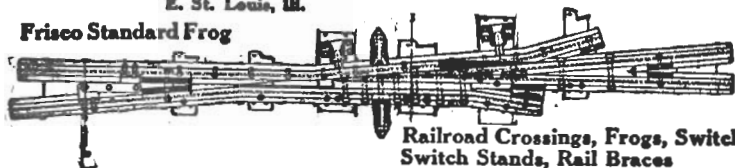


**PYLE - NATIONAL
ELECTRIC HEADLIGHTS**

**ARE BEING USED ON OVER 26,000 LOCOMOTIVES
ALL OVER THE WORLD**

Elliot Frog & Switch Co.
E. St. Louis, Mo.

Frisco Standard Frog



**Railroad Crossings, Frogs, Switches,
Switch Stands, Rail Braces**



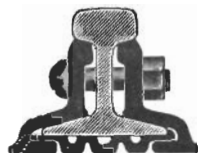
CONTINUOUS JOINT

Over
50,000
Miles
in Use



WEBER JOINT

Rolled
from
Best
Quality
Steel



WOLHAUPTER JOINT

THE RAIL JOINT COMPANY

GENERAL OFFICES:

185 MADISON AVE., NEW YORK CITY

Makers of Base Supported Rail Joints for Standard and Special Rail Sections, also Girder, Step or Compromise, Frog and Switch, and Insulated Rail Joints, protected by patents.

Highest Awards—Paris, 1900; Buffalo, 1901; St. Louis, 1901

Catalog at Agencies
Boston, Mass. India Bldg.
Chicago, Ill. Railway Exchange Bldg.
Denver, Colo. Equitable Bldg.
Portland, Ore. Wilcox Bldg.
Pittsburg, Pa. Oliver Bldg.
St. Louis, Mo. Commonwealth Trust Bldg.
Troy, N. Y. Burden Avenue
Montreal, Can. Board of Trade Bldg.
London, E. C., Eng. 36 New Broad St.

**KIRBY
LUMBER CO.**
Houston, Tex.

MANUFACTURERS
Long Leaf Yellow Pine Lumber

Address Correspondence to
J. W. CHANDLER, General Sales Agt.

Mention us when writing to advertisers, it will help us both.



Ideas Wanted

Frisco employes have made many valuable suggestions which have been turned to good account by the management.

If you have an idea that you think will make a saving for "our railroad" in labor or material, or in betterment of service, send it in.

The man who uses his brains intelligently is his own best "booster".

Your co-operation is earnestly solicited.

Every employe can help.

Send suggestions to

T. A. HAMILTON,
Supervisor of Efficiency, St. Louis, Mo.

W. C. NIXON,
Receiver and Chief Operating Officer.

W. B. BIDDLE,
Receiver and Chief Traffic Officer.

THE HEWITT SUPPLY CO.

C. M. HEWITT, President

HEWITT BABBITT METALS

Standard Metallic Packing Rings

RUBBER GOODS

303 Railway Exchange - CHICAGO

Hewitt Manufacturing Co.

C. M. HEWITT, President

303 Railway Exchange CHICAGO

JOURNAL BEARINGS

AND

BRASS ENGINE CASTINGS

OFFICE AND WORKS

4153 Clayton Ave. - ST. LOUIS, MO.

DEARBORN TREATMENT

Prevents Foaming in Alkali Water Districts, enabling engines to make greater mileage between boiler washings, and haul greater tonnage.

DEARBORN ANTI FOAMING PREPARATIONS should be carried on the engines and applied each time water is taken, dissolving the required quantity in hot water and placing in the engine tank before filling.

DEARBORN CHEMICAL COMPANY

McCormick Building, CHICAGO



Ease of Application



Is one of many reasons that have influenced a large number of Railways to adopt BOSS LOCK NUTS as standard : : : : : :

BOSS NUTS may be applied more easily and more rapidly than any other lock nut—the saving in cost of application as compared with competing devices being in many instances sufficient to cover cost of all BOSS NUTS used.

BOSS NUT COMPANY

Grand Central Terminal
NEW YORK

Railway Exchange
CHICAGO

Mention us when writing to advertisers, it will help us both.

1915

“NINETEEN FIFTEEN bids fair to be the most strenuous year in the history of the world.

☞ “It is safe to predict that out of the seething tumult will arise a man, head and shoulders above all others.

☞ “History proves that such men are born under these conditions.

☞ “Who this man is, and what he will be can only be surmised.

☞ “He may be at the present time a section hand, toiling and thinking in some remote corner of the country.

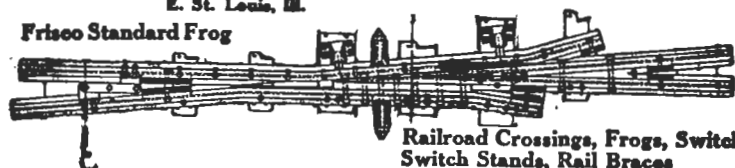
☞ “Opportunities to show ability and power are at hand as never before, for every one.

☞ “In good times the weaklings succeed, but the strong know that it is not in holding a good hand, but in playing a poor hand well.” — *Thompson*.

**PYLE - NATIONAL
ELECTRIC HEADLIGHTS
ARE BEING USED ON OVER 26,000 LOCOMOTIVES
ALL OVER THE WORLD**

Elliot Frog & Switch Co.
E. St. Louis, Ill.

Frisco Standard Frog

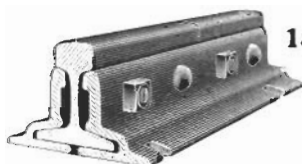


**Railroad Crossings, Frogs, Switches,
Switch Stands, Rail Braces**

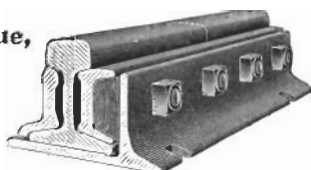
The Rail Joint Company

General Offices
185 Madison Avenue,
New York City

Rolled
from
Best Quality
Steel



Continuous Rail Joint



Weber Rail Joint



Wolhaupter Rail Joint

Catalog at Agencies

Boston, Mass.
Chicago, Ill.
Denver, Colo.
Philadelphia, Pa.
Pittsburg, Pa.
Portland, Ore.
St. Louis, Mo.
Troy, N. Y.



100% Rail Joint

KIRBY LUMBER COMPANY

Largest Producers of Long Leaf Yellow Pine in the World

Harry T. Kendall, General Sales Agent,
W. E. Farman, Ass't Gen. Sales Agent.
Houston, Texas.

Railroad and Car Material Department
Ray Wiess, Northern Sales Manager.
Railway Exchange Bldg., Chicago, Ill.

Mention us when writing to advertisers, it will help us both.