

CONTINENTAL CASUALTY CO.
COMPLETE COMPENSATION
CHICAGO
H.G.B. Alexander
PRESIDENT

Insures more Railroad Men
 Pays More Railroad Men
 Employs more Ex-Railroad Men
THAN ANY OTHER COMPANY

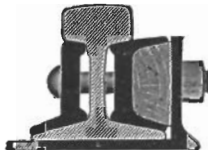
1208 Michigan
 Avenue
CHICAGO

| | |
|---|----------------------------|
| Before I'm hurt tell me how little Income Insurance costs. | Name..... |
| | Address..... |
| | Age Occupation |



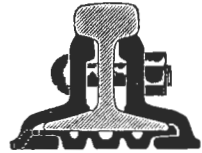
CONTINUOUS JOINT

Over
 50,000
 miles
 in use



WEBER JOINT

Rolled
 from
 Best
 Quality
 Steel



WOLHAUPTER JOINT

THE RAIL JOINT COMPANY

GENERAL OFFICES:

185 MADISON AV., NEW YORK CITY

Makers of Base Supported Rail Joints for Standard and Special Rail Sections, also Girder, Step or Compromise, Frog and Switch, and Insulated Rail Joints, protected by patents.

Highest Awards—Paris, 1900; Buffalo, 1901; St. Louis, 1904.

Catalog at Agencies
 Boston, Mass. India Bldg.
 Chicago, Ill. Railway Exchange Bldg.
 Denver, Colo. Equitable Bldg.
 Portland, Ore. Wilcox Bldg.
 Pittsburg, Pa. Oliver Bldg.
 St. Louis, Mo. Commonwealth Trust Bldg.
 Troy, N. Y. Burden Avenue
 Montreal, Can. Board of Trade Bldg.
 London, E. C., Eng. 36 New Broad St.

| | |
|--|--|
| <p>KIRBY LUMBER CO. Houston, Texas</p> | <p>MANUFACTURERS Long Leaf Yellow Pine Lumber</p> |
| | <p>Address Correspondence to J. W. CHANDLER, General Sales Agt.</p> |
| | |

Mention us when writing to advertisers, it will help us both.

The Baldwin Locomotive Works



PHILADELPHIA, PA.

Crane Locomotive Blow-Off Valve

Malleable
Iron Body;
Crane Hard
Metal Trim-
mings.



Valve opening $2\frac{1}{4}$ inches. Two-inch Boiler connection. Wearing parts renewable. Seats self-cleaning. Closes automatically with the pressure; impossible to stick open.

SAMPLE VALVE FOR TRIAL
WITHOUT CHARGE

CRANE CO.

CHICAGO

ESTABLISHED 1855

ADREON MANUFACTURING CO.

| | |
|------------------------------|----------------|
| Campbell Graphite Lubricator | Turnbuckles |
| Security Back-up Valve | Stop Wedges |
| Security Rail Brace | Brake Jaws |
| American Gravity Coupling | Knuckle Pins |
| Clarke Tension Set Tie Plate | Bolts and Nuts |
| Brake Shoes and Keys | Spikes |

BELL TELEPHONE, Main 3226-3227

Security Bldg., ST. LOUIS, MO.

HEWITT MANUFACTURING CO.

C. M. HEWITT, President

303 Railway Exchange

CHICAGO

Journal Bearings AND BRASS ENGINE CASTINGS

OFFICE AND WORKS:

4153 Clayton Ave.

ST. LOUIS, MO.

ROBERT W. HUNT & CO., Engineers

CHICAGO NEW YORK PITTSBURG ST. LOUIS
SAN FRANCISCO MONTREAL LONDON
TORONTO MEXICO CITY SEATTLE

INSPECTION OF RAILROAD MATERIALS AND EQUIPMENT

Mention us when writing to advertisers, it will help us both.



*First in Quality,
First in Sales,
First in the Hearts
of Union Men.*

HAMILTON CARHARTT, MANUFACTURER
DETROIT.

Write For Beautiful Souvenir Book and Large Handkerchief Free--with Time Book.