

**KIRBY
LUMBER CO.**
Houston, Texas

MANUFACTURERS
Long Leaf Yellow Pine Lumber
Address Correspondence to
J. W. CHANDLER, General Sales Agt.

NEWTON R. WILSON, President
R. M. HALLOWELL, V-Pres't & Gen'l Mgr.

E. A. WILSON, 2d V-Pres't
E. T. BROGAN, Secretary

L. R. MILLARD, Treas.
JOS. MUTH, Auditor

INDUSTRIAL LUMBER CO.
CALCASIEU LONG LEAF YELLOW PINE LUMBER
RAILROAD AND MINING TIMBERS A SPECIALTY

ELIZABETH, CALCASIEU AND
OAKDALE MILLS IN LOUISIANA

Annual Capacity - - - - - 200 Million Feet
Paid-Up Capital and Surplus - - - \$1,200,000.00

BRANCH OFFICES:

CHICAGO, - - - - - 1520-23 Steger Building
Wichita, Kan. Temple, Tex. Monterey, Mex.

GENERAL OFFICES:

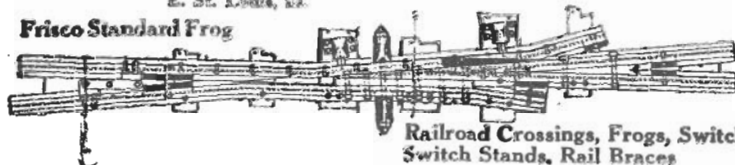
ELIZABETH, - - - LOUISIANA

**BYRNES
BELTING CO.**
ST. LOUIS, MO.

MANUFACTURERS
OAK TANNED LEATHER BELTING
AIR BRAKE HOSE
STEAM HOSE WATER HOSE

Elliot Frog & Switch Co.
E. St. Louis, Mo.

Frisco Standard Frog



Railroad Crossings, Frogs, Switches,
Switch Stands, Rail Braces

UNIFORMS

UNIFORMS

JAMES H. HIRSCH & Co.

223 W. Jackson Blvd.

CHICAGO

Mention us when writing to advertisers, it will help us both.

FLINT Varnish Works

FLINT, MICHIGAN

MANUFACTURE A FULL LINE OF
THE HIGHEST GRADE

Varnishes,	Enamels,
Engine Finishes,	Blacks,
Colors,	Primers,
Surfacers, Etc.	

FOR

THE RAILWAY TRADE

Galena-Signal Oil Co. FRANKLIN, PENN.

SOLE MANUFACTURERS
OF CELEBRATED

GALENA LUBRICANTS

Perfection Valve and Signal Oils

AND

Galena Railway Safety Oil

FOR

STEAM AND ELECTRIC RAILWAY USE
EXCLUSIVELY

*Guaranteed Cost
Expert Service Free*

S. A. MEGEATH - President



Chicago Pneumatic Tool Company



MANUFACTURERS OF

BOYER and KELLER PNEUMATIC HAMMERS

RIVETING, CHIPPING, CALKING.

"LITTLE GIANT" AIR DRILLS

For Every Requirement of the
Modern Railway and Industrial Shop.

Duntley High Duty Electric Drills

Rockford Gasoline Driven Section Car

Fisher Building, CHICAGO.

50 Church St., NEW YORK

The Baldwin Locomotive Works



PHILADELPHIA, PA.

Murphy Metal Car Roofs

Monarch Carlines
Monarch Plastic Roofing
Monarch Pneumatic Tools

OTHER RAILWAY SPECIALTIES

STANDARD RAILWAY EQUIPMENT CO.

722 Frick Building. PITTSBURG, PA.

Car and Locomotive Axles

STEEL FORGINGS

300 to 30,000 pounds each. Rough
Machined or Finished Complete.

Crusher and Hoist Shafts
A SPECIALTY

The Standard Forgings Company

SALES OFFICE:

Railway Exchange Building, Chicago.
Works: Indiana Harbor, Ind.

PYLE-NATIONAL ELECTRIC HEADLIGHTS

ARE BEING USED ON OVER 15,000 LOCOMOTIVES
ALL OVER THE WORLD

PYLE-NATIONAL ELECTRIC HEADLIGHT CO.
CHICAGO

"Both Useful and Ornamental"

IN YOUR OFFICE

A large placard 20 by 28 inches, printed in two colors, illustrating the manner of dismantling and assembling the

BETTENDORF TRUCK

F.M.

Bettendorf Axle Co.,
Davenport, Iowa.

Please send me the Bettendorf Truck Placard.

Name.....

R. R.....

Address.....

Mention us when writing to advertisers, it will help us both.

The Hewitt Supply Co.

C. M. HEWITT, President

HEWITT BABBITT METALS

Standard Metallic Packing Rings

RUBBER GOODS

CHICAGO GRAIN DOORS

303 Railway Exchange - Chicago

THE TEXAS COMPANY

TEXACO FUEL OIL

Conforming to Government Specifications

HIGH IN FUEL VALUE
Efficient — Economical

Texaco Railroad Lubricants

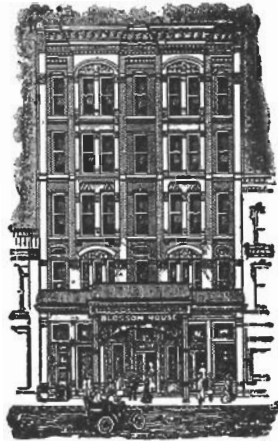
Cut down the wear and tear on rolling stock

ILLUMINATING OILS SIGNAL OILS

THE TEXAS COMPANY

Manufacturers of all kinds of Petroleum Products

WHEN VISITING KANSAS CITY
STOP AT
BLOSSOM HOUSE



OPPOSITE UNION DEPOT
EUROPEAN PLAN



Marsh & McLennan

INSURANCE

IN ALL ITS BRANCHES

159 La Salle Street
CHICAGO

54 Williams Street
NEW YORK

123 Bishopsgate Street
LONDON

Mention us when writing to advertisers, it will help us both.

DIETZ SAFETY LANTERNS

Every railroad man is interested in lanterns and we offer below three styles that are in use throughout the country.

**DIETZ
LANTERNS**



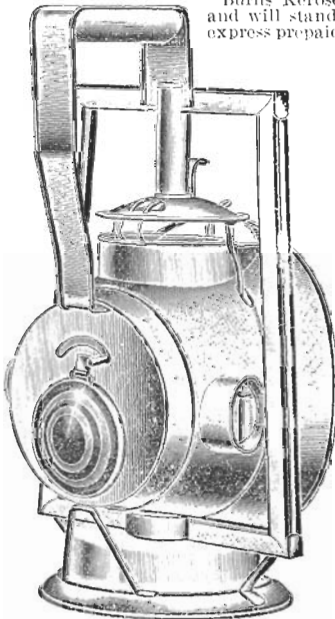
Made in several styles for different services.

Complete railroad lantern catalog sent on request.

**DIETZ
LANTERNS**

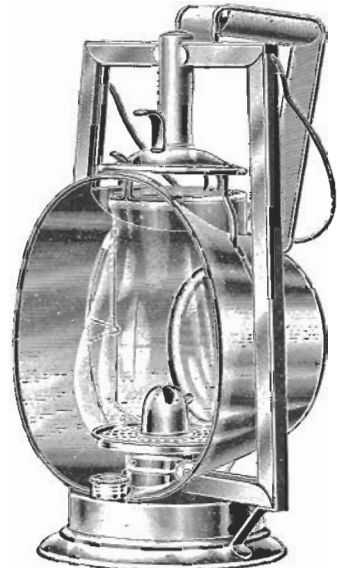
DIETZ NEW "VESTA" R. R. LANTERN

Burns Kerosene. Gives light 3 candle power and will stand all signal motions. Price \$1.50, express prepaid.



**DIETZ "PROTECTOR" TRACKWALKER'S LAMP
(FOR KEROSENE)**

Invaluable for track inspectors, has ruby slide in rear that can be thrown into position for signal purposes. Price \$2.50 each, express prepaid.



**DIETZ "ACME" CAR INSPECTOR'S LAMP
With Improved Steel Bound Tubes**

The strongest and most serviceable car inspector lantern on the market, used by every railroad in the United States. Price \$2.00 each, express prepaid.

**Largest Makers of Lanterns in the World
60 Light St. NEW YORK CITY**

R. E. DIETZ COMPANY

Mention us when writing to advertisers, it will help us both.