

# A Safe Deposit Box

PROVIDES SPECIAL MEANS OF PROTECTION, SAFE-KEEPING,  
PRIVACY AND ACCESSIBILITY FOR VALUABLES

**PROTECTION** from destruction by fire or storm to which dwellings, business houses—even steel frame office buildings are liable.

**SAFE-KEEPING** from burglar and thief, to whom locks and bolts and combination safes are but slight barriers.

**PRIVACY . . .** from meddlesome and dishonest individuals seeking private papers.

**ACCESSIBILITY** at all times during business hours but to the owner only.

For small and precious valuables, Accident Policies, Benefit Certificates,  
Insurance Policies, Notes, Mortgages, Stocks and Bonds.

A SAFE DEPOSIT BOX can be had at a cost of \$5 a year, less than 1½ cents a day.

SAFE DEPOSIT DEPARTMENT

## Mercantile Trust Company

EIGHTH AND LOCUST STREETS, ST. LOUIS

reports that going he handled 1,500 and on the return trip 1,800 passengers. In all that number no one lost their transportation, no one was injured and it was the best and most orderly excursion he ever handled. This speaks well for Frisco men.

### Hugo.

Engineer Hume is on the sick list.

Engineer Rice is off duty because of illness.

Engineer Marean spent June 25 in Springfield, Mo.

J. J. Person, night hostler, is visiting at Blue Mountain, Miss.

Engines 805 and 154 are in the shops to have new flues applied.

Engineer Knox spent a few days recently visiting at Ardmore, Okla.

J. W. Sey, stationary fireman, has returned from a visit to Southern Texas.

Fireman H. H. Matthews is laying off. Mr. Matthews mashed his foot in an accident recently.

John Belcher, machinist apprentice, was off a few days because of an injured foot.

E. Hulse, night round house foreman, has returned from a visit to Springfield, Mo.

Mrs. James Dyer was called to Fort Smith, Ark., because of the illness of her mother.

Fireman W. D. Kimmons has taken thirty days off to visit his old home in Tennessee.

Engineer Mark Lawless is spending a few days in St. Louis. Engineer Reynolds is holding down his run.

Mr. Carr took the test train out of Hugo, June 21, with Engineer Mulvaney, Fireman Morrow and L. E. Foot, and all report a very successful trip.

The Hugo boys will have an employes' picnic July 11. The boys selected the following committee. E. W. Harvey, division foreman; W. Hughes, engineer, and Mr. McDaniels, to locate a suitable grounds for the picnic. Fort Townson has been chosen as the place, and the Hugo business men donated several prizes, as well as lemons, candy, cigars, soda water, ice, etc., in fact, everything that will be needed to make the picnic a success.

## Memphis.

C. M. Story visited Memphis June 26 and 27.

Ward Moore is spending a few days with relatives in Kansas City, Mo.

Assistant Master Mechanic Honaker is spending his vacation in Virginia.

George W. Moore is making several improvements in the car department.

Memphis is to build a "tooth pick" building twelve stories high and with a frontage of 18 feet one inch.

James T. Harlow, stationary engineer, is again around, after being laid up for several weeks with a bad eye.

J. S. Jowers, together with his wife, has returned from Sapulpa, Okla., where they have been visiting relatives.

T. W. Hager, clerk in storekeeper's office, has resigned to accept position with the Schlitz Brewing Company as bookkeeper.

Memphis has four sky scrappers in the course of construction. These with her eighteen, nineteen and twenty-story buildings already occupied, and with her thirty mounted policemen gives the place a metropolitan air.

## Promotions and Changes.

H. P. John is appointed chief draftsman, headquarters St. Louis, Mo., effective July 1.

R. B. Merrick is appointed general agent, Pittsburg, Pa., succeeding D. L. Ewing, promoted, effective July 1.

A. W. Von Arx is appointed commercial agent, New York, N. Y., succeeding R. B. Merrick, promoted, effective July 1.

## Our New Motor Cars.

On our cover page we show reproduction of the first of the six motor cars ordered by the Frisco from the General Electric Company, Schenectady, N. Y., which arrived in St. Louis July 7, and was on exhibition at Union Station from 6 to 8 o'clock in the evening.

The peculiarity of this car is the engine works a dynamo on the car, which in turn generates electricity, which runs the car.

The car is of all steel construction with the exception of the interior finish. It is 70 feet long over all and 10 feet wide, and is divided into five compartments, the passenger compartment being 23 feet long, with seating capacity for 48 passengers; the smoking compartment is 10 feet long, seating 18 passengers; the compartment for colored passengers is 10 feet long, seating 29 passengers; the baggage compartment 8 feet long, and the engine room 11½ feet long.

The power is provided by an 8-cylinder gasoline engine of 200 horse-power capacity, driving a direct connected electric generator for furnishing current to two 100 horse-power each electric motors on the motor truck. The starting mechanism consists of an auxiliary gas engine and generator, and air pump. Air pressure being used for starting the

# THE STANDARD ACCIDENT INSURANCE CO.

OF DETROIT, MICH.

WILL SELL TO EMPLOYEES AT LOW RATES  
A LIBERAL ACCIDENT AND SICKNESS POLICY

SEE ONE OF OUR AGENTS

large engine, and the auxiliary generator for the electric lighting.

The car is capable of running about 65 miles per hour on level, and 35 miles per hour on an ascending grade of 26 feet to the mile, or 17½ miles an hour on an ascending grade of 52 feet per mile.

The car is heated by hot water from a special heater in the engine room and lighted by electricity.

The seats are longer than the average coach seat, being intended to seat three passengers each.

The interior of the car is neatly finished throughout with mahogany, and the coach seats are covered with Friezette plush.

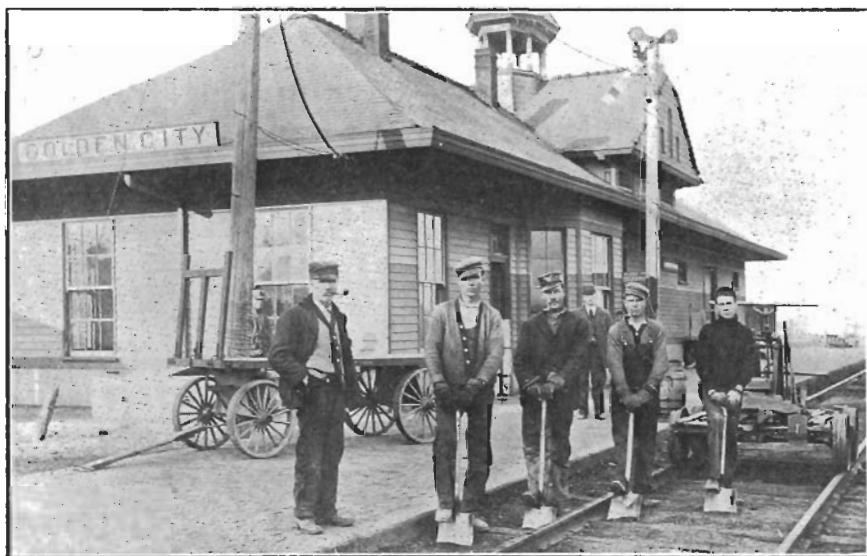
The car is controlled by both automatic and straight air appliances, and

equipped with M. C. B. couplers for the purpose of hauling a trailer coach in case of necessity.

A trial run was made from St. Louis to Springfield, Mo., on July 9 and the car was found adequate in every particular, making as good time as No. 3.

D. L. Ewing is appointed assistant general freight agent, St. Louis, succeeding Charles Hall, assigned to other duties, effective July 1.

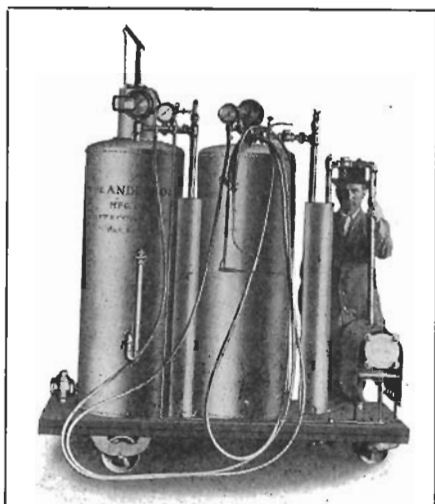
D. M. Knox, formerly assistant mechanical engineer of the Missouri Pacific, is appointed mechanical engineer of the Frisco, effective July 1.



### Veteran at Section 27.

The accompanying shows Section Foreman Edward Lock and his men raising track on the main line at Golden Station. Mr. Lock may be seen standing on the platform with pipe in his

mouth. He began work twenty-seven years ago on the old Memphis as section hand, and in 1891 he was given section 27, where he still continues to serve.



ANDERSON TYPE OF  
**Oxy-Acetylene Welding  
 and Cutting Plants**

*AUTO-GENERATING  
 producing gases as needed*

For welding Cast-Iron in any form; Aluminum in any shape; Brass, Bronze, Copper and Steel; and for the rapid cutting of the above metals.

*Send for Catalogue*

MANUFACTURED BY

**The Anderson Manufacturing Co.,**  
 COFFEYVILLE, KAN.      LIMA, OHIO

**Burton W. Mudge & Company**

*Railroad Supplies*

Peoples Gas Bldg.

CHICAGO

Geo. H. Bennett is appointed general superintendent of the Paris & Great Northern, with headquarters at Paris, Tex., succeeding W. H. Upton, resigned, effective May 9.

**Galena-Signal Oil Co.**

FRANKLIN, PENN.

SOLE MANUFACTURERS  
 OF CELEBRATED

**GALENA LUBRICANTS**

**Perfection Valve and Signal Oils  
 AND  
 Galena Railway Safety Oil**

FOR  
 STEAM AND ELECTRIC RAILWAY USE  
 EXCLUSIVELY

*Guaranteed Cost  
 Expert Service Free*

S. A. MEGEATH - President

**FLINT**

**Varnish Works**

FLINT, MICHIGAN

MANUFACTURE A FULL LINE OF THE  
 HIGHEST GRADE

Varnishes,                      Enamels,  
 Engine Finishes,              Blacks,  
 Colors,                              Primers,  
 Surfacers, Etc.

FOR  
**THE RAILWAY TRADE**

# Do Your Cooking in the Cool

A hot kitchen is little better than a prison in summer. But the range is there, so all the cooking and the washing must be done there, too.

What a relief it would be to move the range where you pleased. You can do this with a New Perfection Oil Cook-stove—cook your dinner out on the porch, if you like. It is the only range that is really portable—that works equally well in any place. There are no connections to be made, as in a gas range; no wiring, as with an electric stove; no sooty flues and ash-filled grates, as with coal or wood.



The long, enameled chimneys carry the heat directly up to saucepans, oven or boiler; you get full value from your fuel, without waste.

**New Perfection**  
**WICK BLUE FLAME**  
**Oil Cook-stove**

Made with 1, 2 and 3 burners, with long, turquoise blue enameled chimneys. Handsomely finished throughout. The 2- and 3-burner stoves can be had with or without a cabinet top, which is fitted with drop shelves, towel racks, etc.

Dealers everywhere; or write for descriptive circular to the nearest agency of the

**Standard Oil Company**

(Incorporated)

Mention us when writing to advertisers. It will help us both.