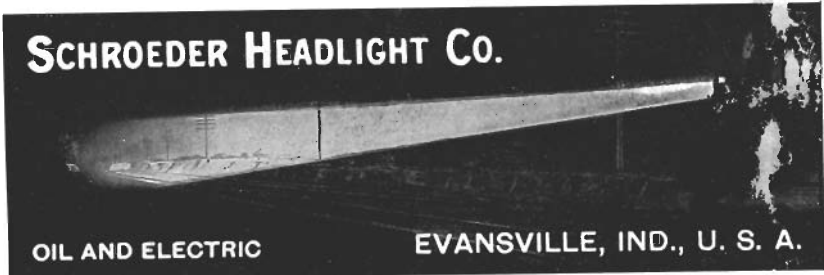


SCHROEDER ELECTRIC HEADLIGHTS Saving of 60 per cent of fuel as compared with other heavy insulation on the windings. No burnouts or shorts. Extra lead coils.



No cleaning of Commutator. No cleaning or filling of the Lamp electrode. Strong and steady light all times. No wear of valve, nozzle, wheel or shaft. SCHROEDER HEADLIGHT COMPANY, EVANSVILLE, IND., U. S. A.

ONE DOLLAR OPENS a savings account with us, on which we pay $3\frac{1}{2}\%$ interest, compounded semi-annually.

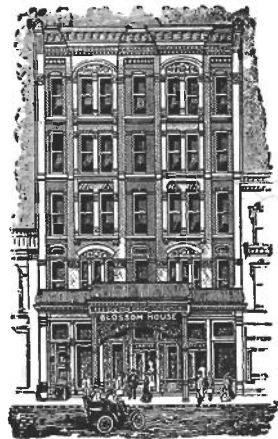
Our Savings Department is open Monday evenings from 5:00 to 8:00 for your convenience, in addition to the regular daily business hours.

St. Louis Union Trust Co.

4th and Locust Streets

Capital, Surplus and Profits, \$11,600,000.00

When Visiting Kansas City
STOP AT
BLOSSOM HOUSE



OPPOSITE UNION DEPOT
EUROPEAN PLAN

MARSH & MCLENNAN

INSURANCE

IN ALL ITS BRANCHES

159 La Salle Street
CHICAGO

54 William Street
NEW YORK

123 Bishopsgate Street
LONDON

SPENCER OTIS COMPANY

CHICAGO :: ILL.

ADREON MANUFACTURING CO.

Carr-Bell Graphite Lubricator	Turnbuckles
Security Back-up Valve	Stop Wedges
Security Rail Brace	Brake Jaws
American Gravity Coupling	Knuckle Pins
Clarke Tension Set Tie Plate	Bolts and Nuts
Brake Shoes and Keys	Spikes

BELL TELEPHONE, Main 3226-3227

SECURITY BUILDING - ST. LOUIS, MO.

CRANE LOCOMOTIVE BLOW-OFF VALVE

Malleable Iron
Body; Crane
Hard Metal
Trimings.



Valve opening 2½ inches. Two-inch Boiler connection. Wearing parts renewable. Seats self-cleaning. Closes automatically with the pressure; impossible to stick open.

SAMPLE VALVE FOR TRIAL
WITHOUT CHARGE.

CRANE CO.

CHICAGO

ESTABLISHED 1855

"CLEVELAND" Open Side Planers.
"AMERICAN" Lathes.
"AMERICAN" Radials.
"AMERICAN" Planers.
"AMERICAN" Shapers.
"KING" Boring Mills.
"RELIANCE" Bolt Cutters.
"LEA-SIMPLEX" Cold Saws.
"KEMPSMITH" Milling Machines.

Bowman-Blackman Machine Tool Co.

(SUCCESSOR TO ALBERT B. BOWMAN)

SAINT LOUIS

HIGH GRADE MACHINE SHOP EQUIPMENT

KILBY FROG AND SWITCH CO.

BIRMINGHAM, ALABAMA



MANUFACTURERS OF

**RAILROAD CROSSINGS,
FROGS, SWITCHES,
SWITCH STANDS,
Etc.**

HEWITT MANUFACTURING CO.

C. M. HEWITT, President

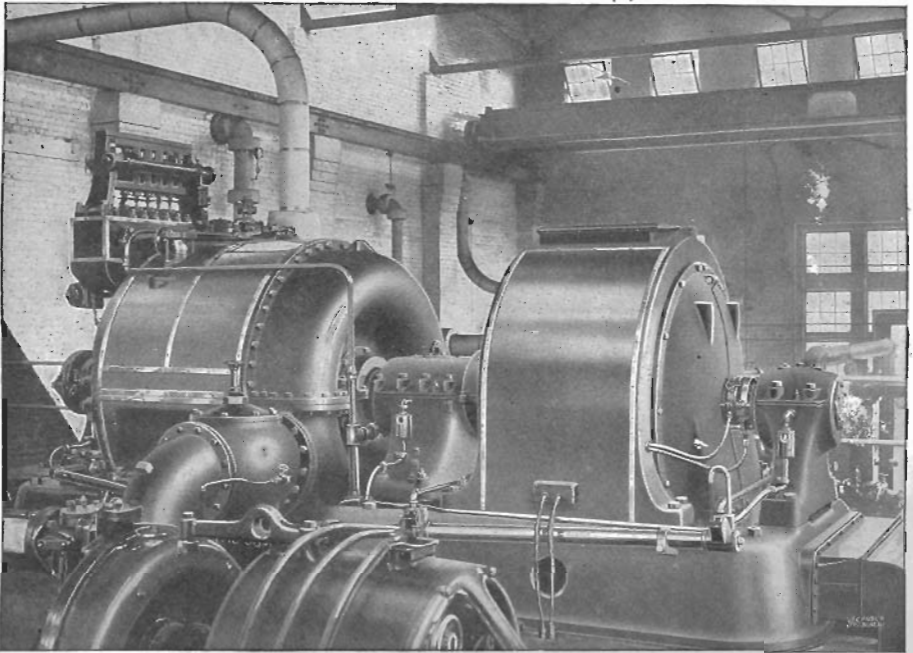
303 Railway Exchange CHICAGO.

Journal Bearings
and
Brass Engine Castings

OFFICE AND WORKS:

4153 Clayton Ave. ST. LOUIS, MO.

Mention us when writing to advertisers, it will help us both.



Curtis Horizontal Steam Turbines

When the Chesapeake and Ohio Railroad Shops at Huntington, W. Va., were remodeled, in March, 1910, Curtis Steam Turbines were installed to furnish power, in place of reciprocating engines formerly used.

The turbine equipment: One 750 k. w. (937 k. v. a.) background in illustration; one 100 k. w.; one 25 k. w. (exciter) foreground in illustration.

solve the problem of economical power production for medium-sized plants.

Curtis Horizontal Turbines are characterized by

High Economy over a wide load range.
Substantial Construction in every detail.
Reliability of operation under severe conditions.
Minimum floor space and installation cost.

These, and other superior features, are being constantly demonstrated in plants similar to that illustrated above.

Let us refer you to an installation in your vicinity.

General Electric Company

Largest Electrical Manufacturer in the World

Principal Office: Schenectady, N. Y.

Sales offices in all large cities

2797

Mention us when writing to advertisers, it will help us both.



“You Get the Job”

That's what the trained man, the expert in his line, hears today from the man that hires. Training lands the job—training that means high-grade work and a short cut to results. And training wins quick advancement to still better jobs.

The day of the “Jack-of-all-trades” is passed. This is the time of the specialist. No concern can afford to place a high-grade equipment in the hands of low-grade men. Competition forces employers to meet skill with skill.

The business of the International Correspondence Schools is to supply training; to give job-getting and job-bettering ability; to raise salaries.

Every month upwards of 300 I. C. S. students write to Scranton to tell of positions secured or bettered—of earnings increased and prospects brightened—through study of I. C. S. Courses. Last month the number was 416. The letters came from every section and from all sorts and conditions of men.

All got the education—the training that enabled them to get work they liked and advance in it. They furnished the ambition and perseverance. The I. C. S. furnished the training.

If you wish to make sure of the job you want—there is an I. C. S. way for you. To find out all about it, mark and mail the coupon. Doing so will commit you to nothing, place you under no obligation, and may prove to be the turning point in your career.

Don't wait.

Mail the Coupon NOW.

International Correspondence Schools Box 1167, Scranton, Pa.

Please explain, without further obligation on my part, how I can qualify for the position, trade, or profession before which I have marked X.

Locomotive Engineer	Electrician
Air-Brake Instructor	Electrical Engineer
Air-Brake Inspector	Mechanical Engineer
Air-Brake Repairman	Mechanical Draftsm'n
General Foreman	Plumb. & Steam Fitt'g
R. R. Shop Foreman	Mining Engineer
R. R. Traveling Eng.	Bridge Engineer
R. R. Trav'g Fireman	Chemist
R. R. Construct'n Eng.	Assayer
Civil Engineer	Banker
Surveyor	Bookkeeper
Architect	Stenographer
Concrete Construction	U. S. Civil Service
Automobile Running	Advertising Man

Name _____

Employed by _____ R. R.

St. & No. _____

City _____ State _____