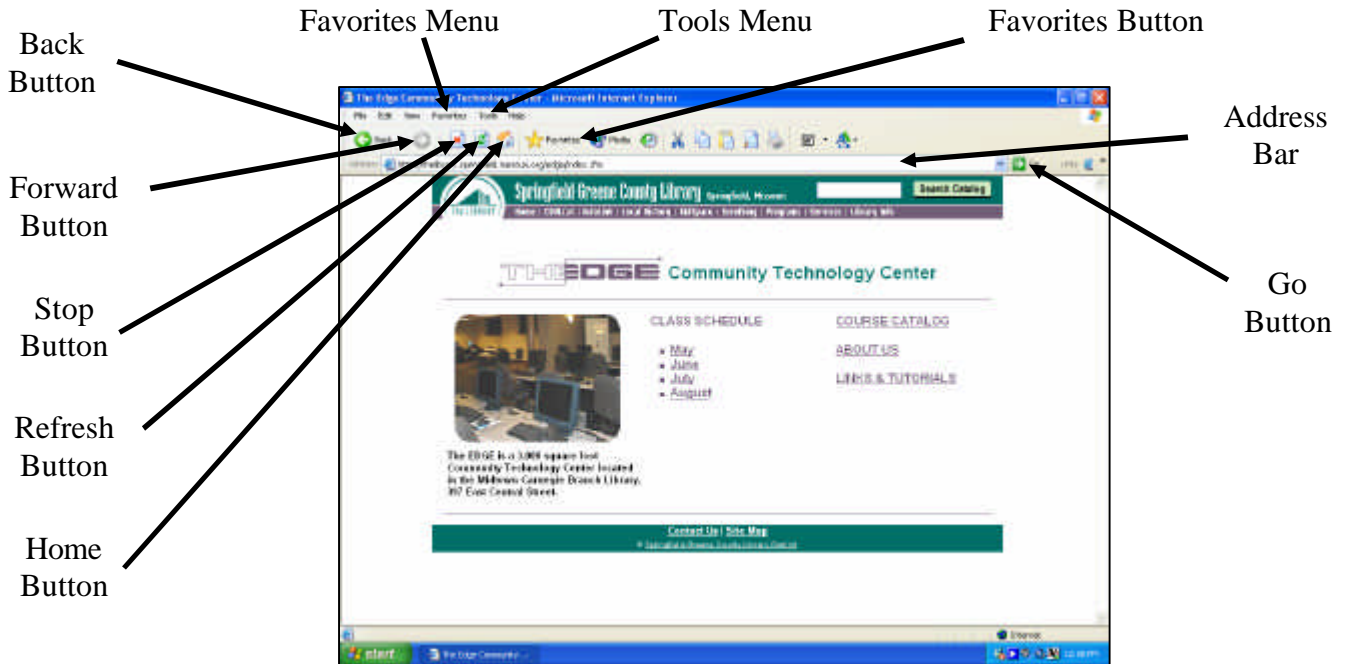


Internet Explorer and Netscape Navigator

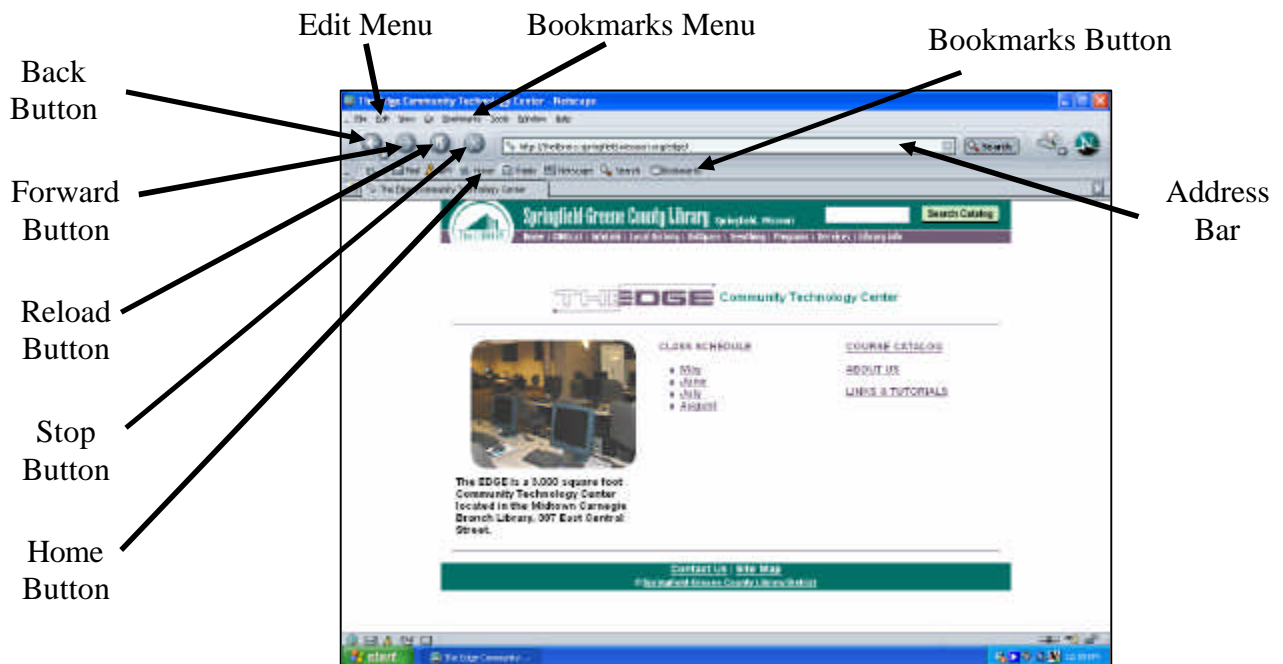
Internet Explorer

<http://edge.sgcl.org> viewed with Internet Explorer



Netscape Navigator

<http://edge.sgcl.org> viewed with Netscape Navigator



Favorites and Bookmarks

Favorites or Bookmarks are saved addresses to Web sites that have been added to a list of saved addresses. Clicking on an address in the list of saved addresses returns to the site.

Creating a **Favorite** in Internet Explorer:

1. Click on *Favorites* in the menu bar and select *Add to Favorites* from the menu.
2. If desired, click in the *Name* box and type a new name.
3. Click the OK button.

Visiting a saved web page:

1. Click on the *Favorites* menu in the menu bar.
2. Click the page name in the list.

Clicking the *Favorites* button on the toolbar instead of using the *Favorites* menu on the menu bar opens the Favorites list in a separate pane on the left side of the screen that remains open until it is closed by either clicking the close button in the pane or clicking the *Favorites* button on the toolbar.

Creating a **Bookmark** in Netscape Navigator

1. Click on *Bookmarks* in the menu bar
2. Select *Bookmark This Page* from the menu and the page will be saved automatically.

Visiting a saved web page:

1. Click on the *Bookmarks* menu in the menu bar.
2. Click the page name in the list.

Clicking the *Bookmarks* button on the toolbar opens a drop down menu identical to the *Bookmarks* menu in the menu bar.

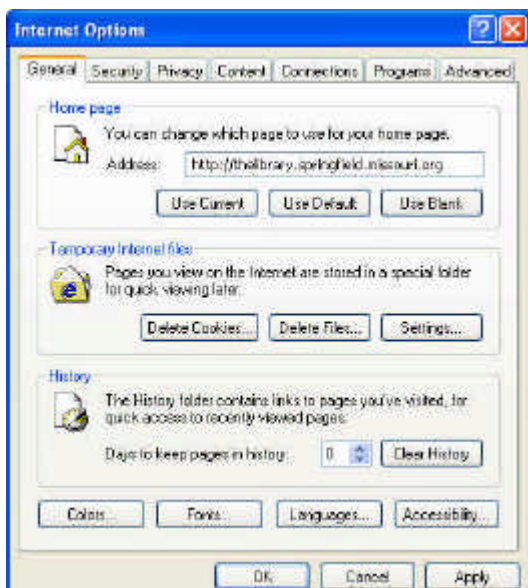
When Netscape is installed on a computer it automatically imports Favorites saved in Internet Explorer. To access saved Internet Explorer Favorites, open the Bookmarks list and choose *Imported IE Favorites*.

Settings

Basic settings, options and preferences are located in different places in the two browser programs.

Internet Options in Internet Explorer

Click on *Tools* in the menu bar and select *Internet Options* from the menu and select the desired tab at the top of the window.



Preferences in Netscape

Click on *Edit* in the menu bar and select *Preferences* from the menu and select the desired option from the navigation pane on the left.

